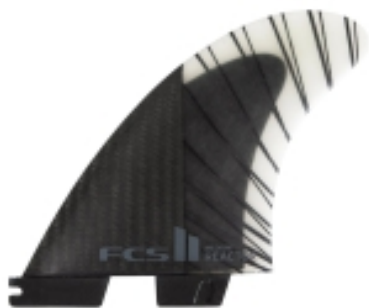




FCS II REACTOR PC CARBON TRI FIN SET BLACK CHARCOAL

Code: FREA-CC03

€ 129,00



FCS

FCS II REACTOR PC CARBON TRI FIN SET BLACK CHARCOAL

LIGHTER CONSTRUCTION. SMOOTHER FEEL.

3 Fins set

The new PC Carbon Essential Series utilises a superior blend of carbon tissue and our ultralight AirCore construction to deliver a more user-friendly flex to achieve faster start up acceleration, and a smoother feel through turns.

Designed for speed and tight turns, with added tail release.
Upright template allows for tighter, more acute directional changes.
Smaller centre fin for increased pivot and tail release.
Ideal for surfers who like to perform fast, progressive turns.
Ideal Conditions

Suitable for hollow waves, particularly good for beach breaks.
Board Types

Designed to fit the FCS II Fin System.
Recommended for performance shortboards with moderate-to-low rocker.
Fin Family

Reactor: Find Speed. Speed, tight turns & snaps.

Performance Core Carbon

Often referred to as PC Carbon or PCC, these fins are highly responsive and feature strategically placed carbon that's designed to complement the fin template. PCC fins suit fast surfing and are favored by power surfers who like to perform explosive turns on critical parts of the wave.

The new PCC Essential Series fins have been constructed using AirCore technology, which is a pressed polyurethane foam core that mimics the geometric foil of the fin. With AirCore we can make a much lighter fin with total manipulation of the flex.

The internal carbon framework is designed specifically to suit each template, and by switching to epoxy resin and adding a carbon twill to the base we've delivered a more user-friendly flex pattern. Stiffness in the lower half of the fin enhances drive and acceleration from take-off, and a softer flex through the top half of the fin results in a smoother and more predictable feel when

Surfcorner Store

Viale Umago 27 47921 Rimini, Italy

+39 0541 083880

Url: https://www.surfcornerstore.com/fcs_ii_reactor_pc_carbon_tri_fin_set_black_charcoal



turning.

SMALL (55Kg - 70Kg / 120 - 155 Lbs)
MEDIUM (65Kg - 80Kg / 145 - 175 Lbs)
LARGE (75Kg - 90Kg / 165 - 200 Lbs)

Performance Core Carbon Spesso denominate PC Carbon o PCC, queste pinne sono altamente reattive e sono dotate di carbonio posizionato strategicamente, progettato per completare la sagoma della pinna. Le pinne PCC sono adatte al surf veloce e sono le preferite dai surfisti che amano eseguire curve esplosive su parti critiche dell'onda.

Le nuove pinne PCC Essential Series sono state costruite utilizzando la tecnologia AirCore, che è un nucleo in schiuma di poliuretano pressato che imita la lamina geometrica della pinna.

Con AirCore è stata realizzata una pinna molto più leggera con totale manipolazione del flex. La struttura interna in carbonio è progettata specificamente per adattarsi a ogni modello e, passando alla resina epossidica e aggiungendo un twill di carbonio alla base, abbiamo fornito un modello di flessione più user-friendly. La rigidità nella metà inferiore della pinna migliora la spinta e l'accelerazione dal decollo, e una flessione più morbida attraverso la metà superiore della pinna si traduce in una sensazione più fluida e prevedibile in curva.

MEDIUM (65Kg - 80Kg / 145 - 175 Lbs)
LARGE (75Kg - 90Kg / 165 - 200 Lbs)

Queste pinne sono progettate per essere usate con il nuovo sistema FCS II

BASE ”
BASE MM
DEPTH ”
DEPTH MM
AREA ”
AREA MM
SWEEP DEG.
FOIL

Reactor SML
4.22
107
4.45
113
14.18
9150
31.9
FLAT

Reactor MED
4.34
110
4.57
116
14.96

Surfcorner Store

Viale Umago 27 47921 Rimini, Italy

+39 0541 083880

Url: https://www.surfcornerstore.com/fcs_ii_reactor_pc_carbon_tri_fin_set_black_charcoal



9650
31.9
FLAT

Reactor LRG
4.45
113
4.68
119
15.73
10150
31.9
FLAT

Surfcorner Store

Viale Umago 27 47921 Rimini, Italy

+39 0541 083880

Url: https://www.surfcornerstore.com/fcs_ii_reactor_pc_carbon_tri_fin_set_black_charcoal