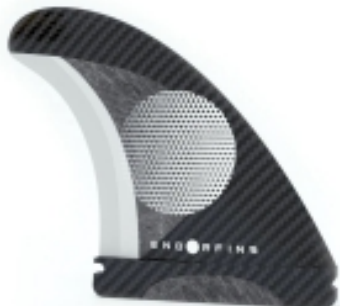




ENDORFINS PINNE KS1 3 FIN SET SINGLE TAB MEDIUM

Code: FINK-KS1-3F-1-M-BKWH

€ 119,95



ENDORFINS PINNE KS1 3 FIN SET SINGLE TAB MEDIUM

Designed by 11 time world champ "Kelly Slater"

KS1 — Medium

FRONT | CENTER

B — 113.5mm | B — 109mm

H — 116.5mm | H — 113mm

A better build – innovative carbon inlays in Endorfins add strength and flex that enable them to be built with a core comprised of 90% pure air. As a result, Endorfins not only provide optimum performance but also literally float on water.

FIN BOXES: Each set is built with a base that is compatible with either TWO TAB FIN BOXES or SINGLE TAB FIN BOXES. The Futures compatible base on Endorfins will work just like a fin built by Futures with a Futures base. The FCSII compatible base will require two screws that will come with the fins. Endorfins with FCSII compatible bases will not click in and click out.

THE BRANDING: The circle on the side of each Endorfins fin represents flow. It's a new take on Kelly's iconic circular branding that has appeared on every fin he's endorsed previously, paying homage to the past while building forward towards the future.

THE ECO STORY: "Screw your fins, not your ocean". Kelly has a hobby of collecting fins from the reef in front of his home in Hawaii. These fins are trash, abandoned on the ocean floor. By screwing our fins into our surfboards – and with the fact that they float - we prevent this from happening. We are additionally continuing our commitment to Sea Trees – 'wiping' the yearly carbon footprint of our fin production through conserving kelp forest in California, protecting rain forest in Africa, and planting mangrove trees in Indonesia.

Surfcorner Store

Viale Umago 27 47921 Rimini, Italy

+39 0541 083880

Url: https://www.surfcornerstore.com/endorfins_pinne_ks1_3_fin_set_single_tab_medium